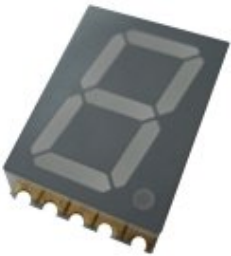


## Display ■ Surface-mount ELSS-506UTWA/T5/S290



### Features

- Industrial standard size.
- Packaged in tape and reel for SMT manufacturing.
- The thickness is thinner than tradition display.
- Low power consumption.
- Categorized for luminous intensity.
- Pb free and RoHS compliant.

### Description

- The ELSS-506UTWA/T5/S290 is a 13mm (0.51") digit height seven-segment display.
- The display provides excellent reliability in bright ambient light.
- The device is made with white segments and gray surface.

### Applications

- Home appliances.
- Instrument panels.
- Digital readout displays.

## Device Selection Guide

Chip Materials	Emitted Color	Resin Color
InGaN	Pure White	White Diffusion

## Absolute Maximum Ratings (Ta=25 °C)

Parameter	Symbol	Rating	Unit
Reverse Voltage	$V_R$	5	V
Forward Current	$I_F$	25	mA
Peak Forward Current (Duty 1/10 @1KHz)	$I_{FP}$	100	mA
Power Dissipation	$P_d$	110	mW
Operating Temperature	$T_{opr}$	-40 ~ +105	
Storage Temperature	$T_{stg}$	-40 ~ +105	
ESD (Classification acc. AEC Q101)	$ESD_{HBM}$	150	V
Soldering Temperature (Soldering time 5 seconds)	$T_{sol}$	260	

## Electro-Optical Characteristics (Ta=25 °C)

Parameter	Symbol	Min.	Typ.	Max.	Unit	Condition
Luminous Intensity <sup>*1</sup>	$I_v$	30.0	86.9	-----	mcd	$I_F=5mA$
Chromaticity Coordinates <sup>*2</sup>	x	0.270	-----	0.310	-----	$I_F=10mA$
	y	0.222	-----	0.343	-----	
Forward Voltage <sup>*2</sup>	$V_F$	-----	2.75	3.7	V	$I_F=5mA$
Reverse Current <sup>*2</sup>	$I_R$	-----	-----	50	$\mu A$	$V_R=5V$

Note:

- Luminous Intensity is a average value which be measured one 7-segment.
- Tolerance of Luminous Intensity:  $\pm 10\%$
- Tolerance of Forward Voltage:  $\pm 0.1V$
- The Chromaticity Coordinates data is SMD specification.

**Bin Range of Luminous Intensity**

Bin Code	Min.	Max.	Unit	Condition
U	30.0	48.0	mcd	$I_F = 5\text{mA}$
V	42.0	67.0		
W	59.0	94.0		
X	83.0	133.0		
Y	116.0	186.0		

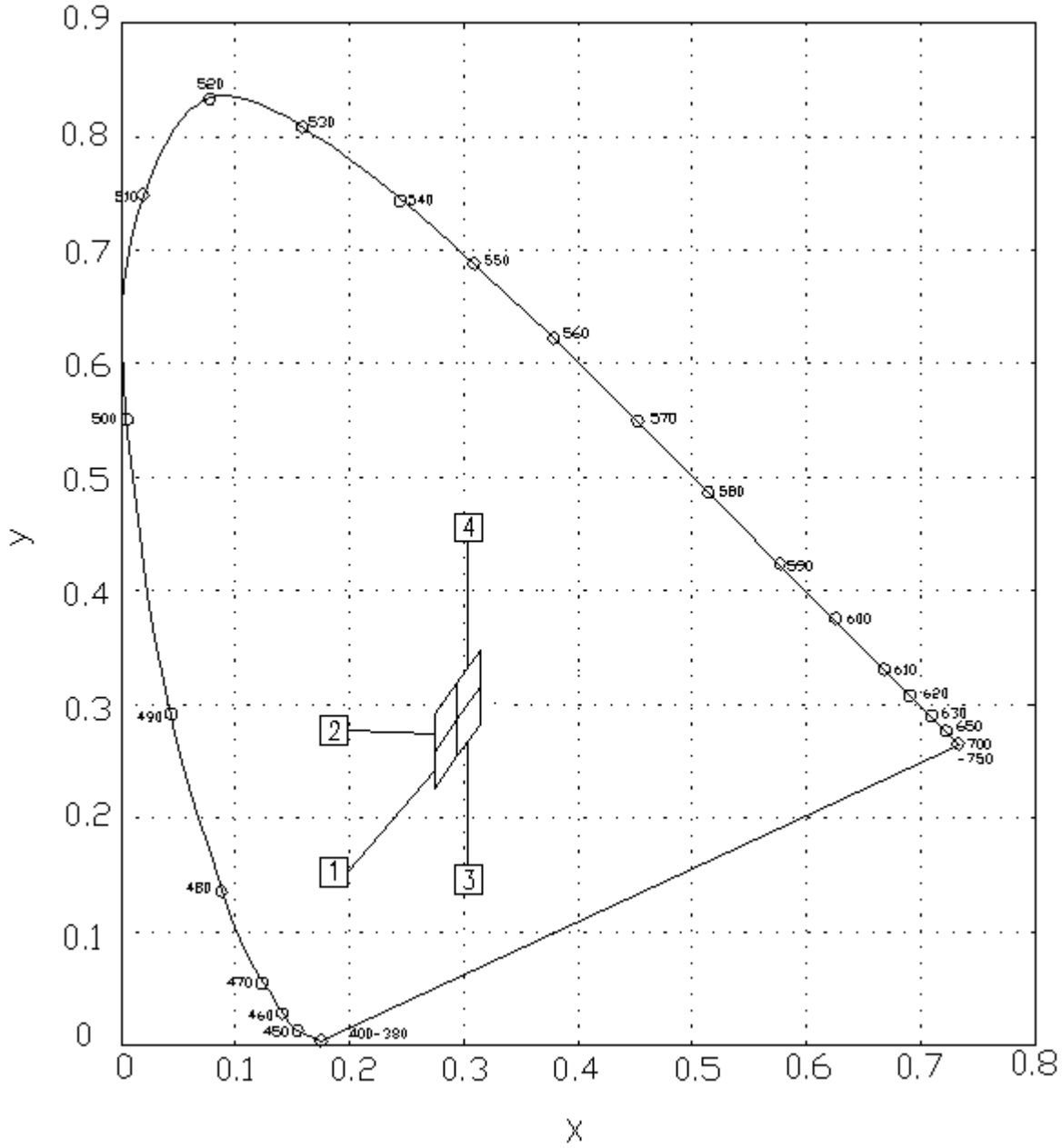
**Chromaticity Coordinates Specifications for Bin Grading**

Bin Code	CIE_x	CIE_y	Condition
1	0.270	0.222	$I_F = 10\text{mA}$
	0.270	0.254	
	0.290	0.284	
	0.290	0.250	
2	0.270	0.254	
	0.270	0.287	
	0.290	0.315	
	0.290	0.283	
3	0.290	0.250	
	0.290	0.283	
	0.310	0.311	
	0.310	0.278	
4	0.290	0.283	
	0.290	0.315	
	0.310	0.343	
	0.310	0.311	

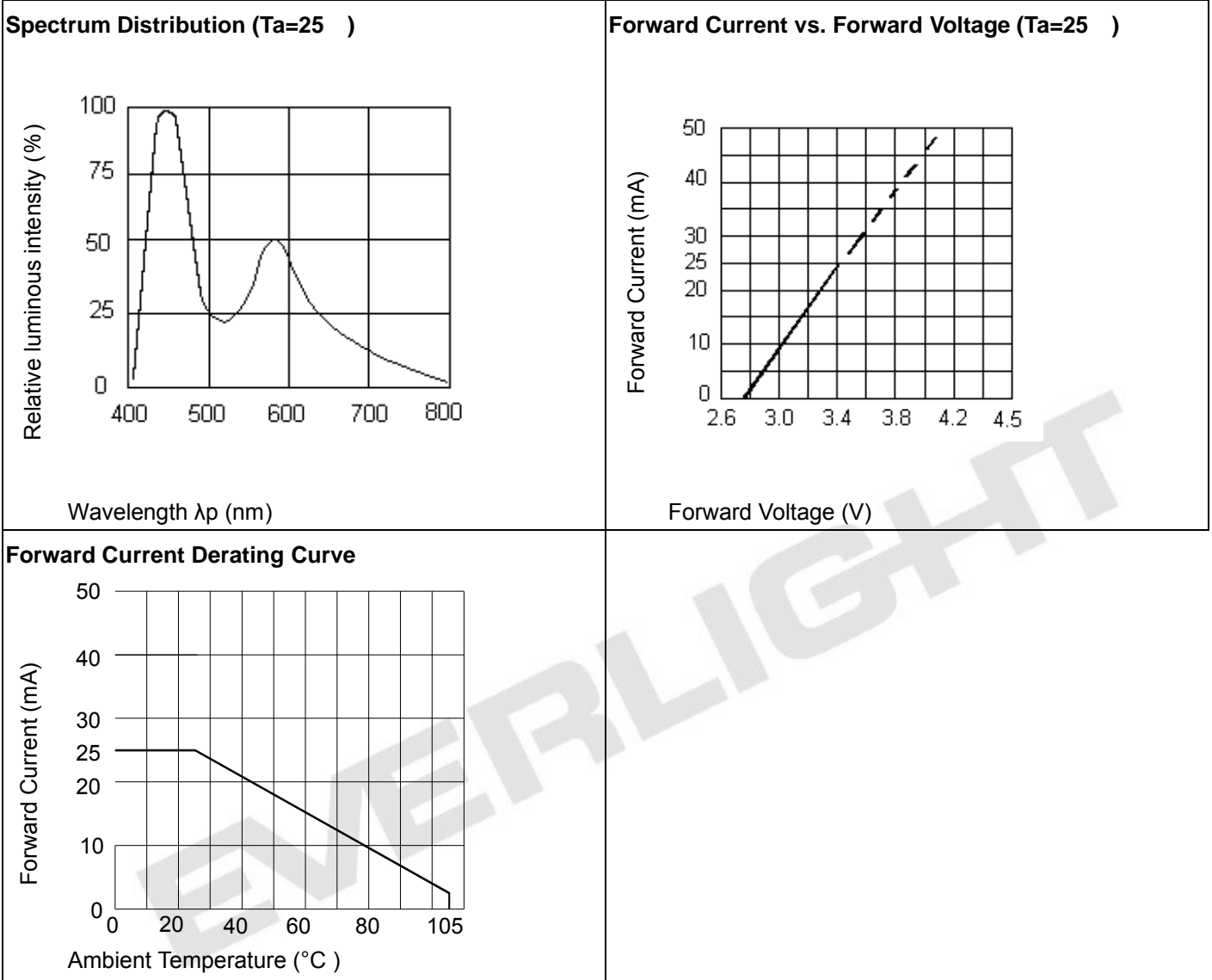
Notes:

1.The C.I.E. 1931 chromaticity diagram ( Tolerance  $\pm 0.01$ ).

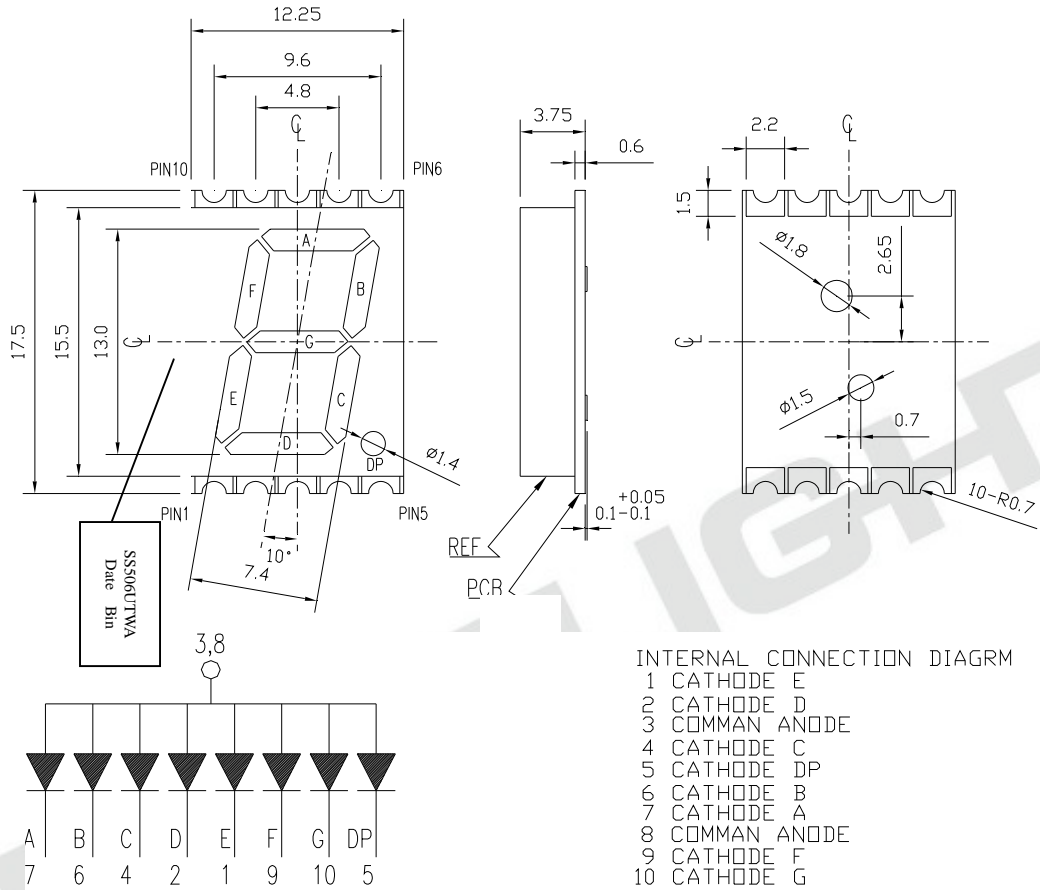
CIE Chromaticity Diagram



**Typical Electro-Optical Characteristics Curves**



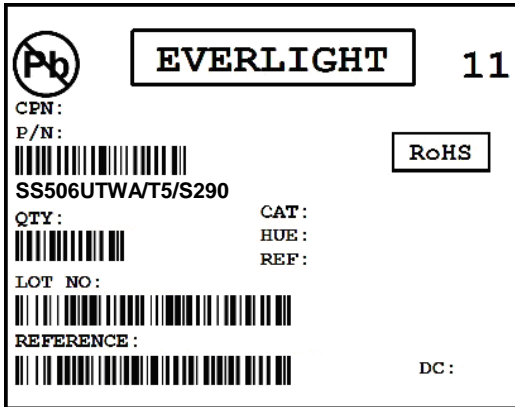
Package Dimension & Internal Circuit Diagram



Note: Tolerances unless mentioned  $\pm 0.25\text{mm}$ . Unit = mm

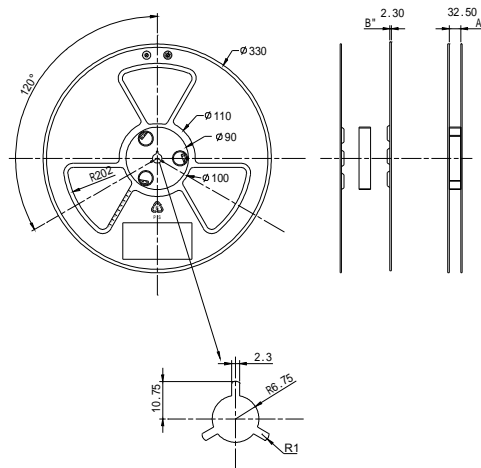
Packing Materials

Label Explanation

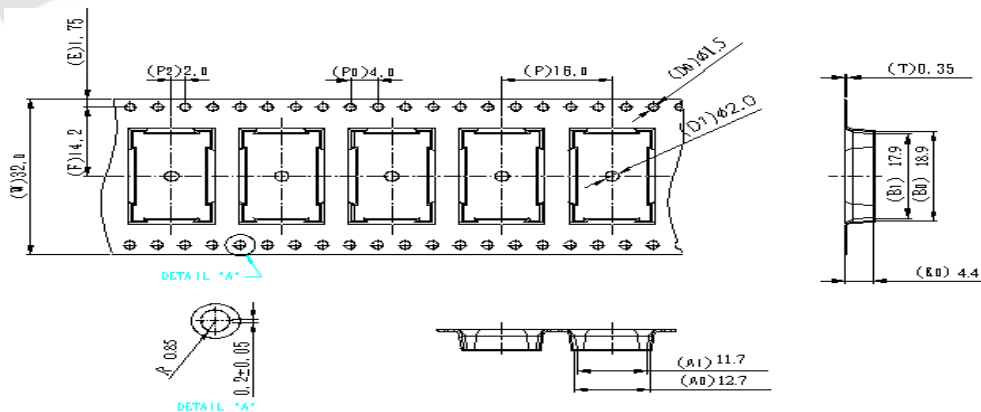


- CPN: Customer's Product Number
- P/N: Product Number
- QTY: Packing Quantity
- CAT: Luminous Intensity Rank
- HUE: Reference
- REF: Reference
- LOT No: Lot Number
- DC: Year and Weekly
- REFERENCE: Volume Label code

Reel Dimensions

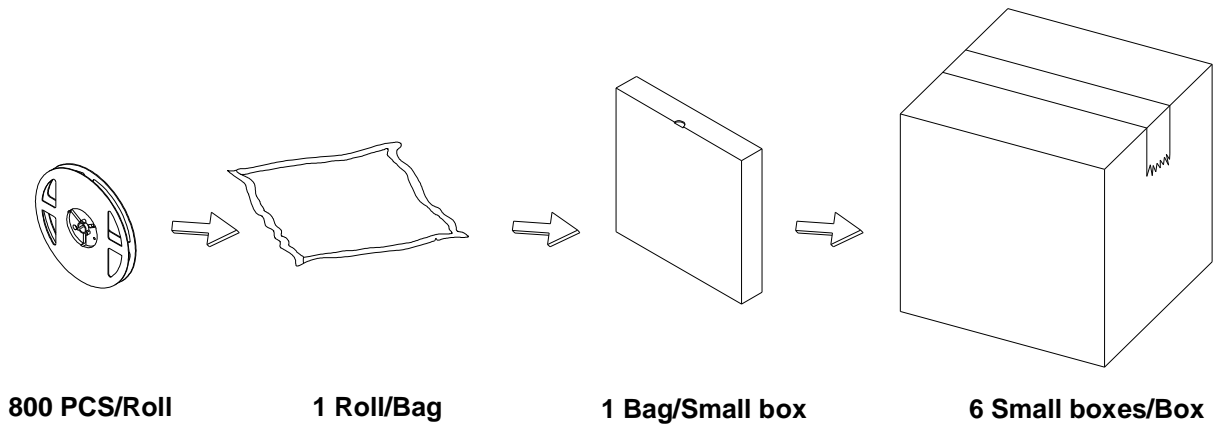


Carrier Tape Dimensions: Loaded Quantity 800 PCS Per Reel



Note: Tolerances unless mentioned  $\pm 0.25\text{mm}$ . Unit = mm

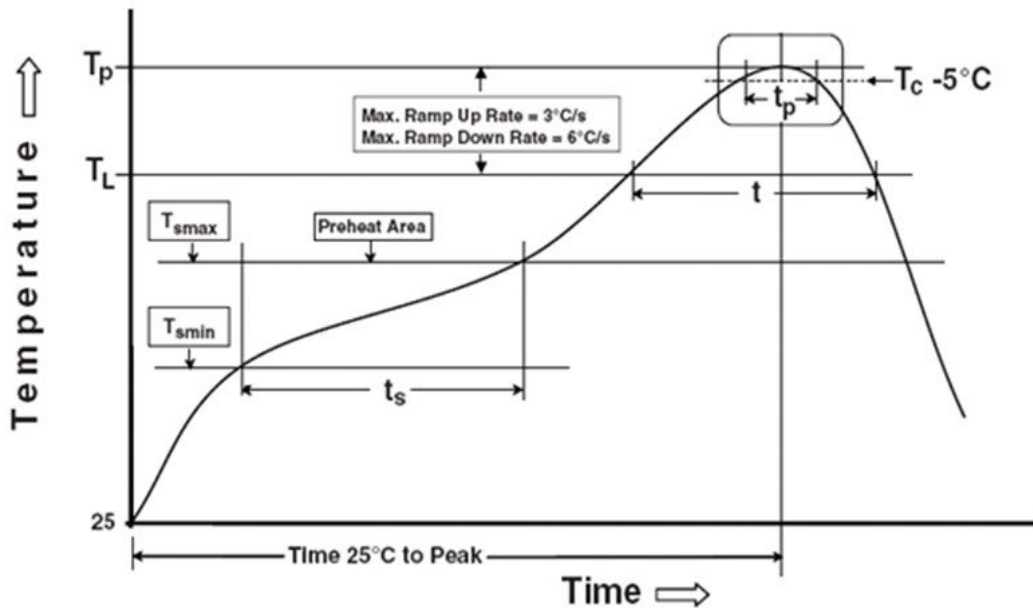
**Packing Process**



**Precautions for Use**

1. Soldering Condition

1.1 (A) Maximum Body Case Temperature Profile for evaluation of Reflow Profile



Note:

Reference: IPC/JEDEC J-STD-020D

**Preheat**

Temperature min ( $T_{smin}$ )	150 °C
Temperature max ( $T_{smax}$ )	200 °C
Time ( $T_{smin}$ to $T_{smax}$ ) ( $t_s$ )	60-120 seconds
Average ramp-up rate ( $T_{smax}$ to $T_p$ )	3 °C/second max.

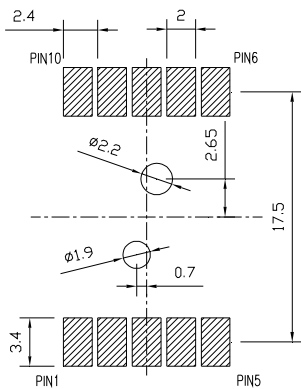


**Other**

Liquidus Temperature ( $T_L$ )	217 °C
Time above Liquidus Temperature ( $t_L$ )	60-150 seconds
Peak Temperature ( $T_P$ )	260 °C
Time within 5 °C of Actual Peak Temperature: $T_P - 5^\circ\text{C}$	30 seconds
Ramp- Down Rate from Peak Temperature	6 °C/second max.
Time 25°C to peak temperature	8 minutes max.
Reflow times	1 time

All parameters are maximum body case temperature values and cannot be considered as a soldering profile. The body case temperature was measured by soldering a thermal couple to the soldering point of LEDs.

1.2 (B) Recommend soldering pad



**Application Restrictions**

1. specification described in this document. Above specification may be changed without notice. EVERLIGHT will reserve authority on material change for above specification.
2. When using this product, please observe the absolute maximum ratings and the instructions for using outlined in these specification sheets. EVERLIGHT assumes no responsibility for any damage resulting from use of the product which does not comply with the absolute maximum ratings and the instructions included in these specification sheets.
3. These specification sheets include materials protected under copyright of EVERLIGHT Corporation. Please don't reproduce or cause anyone to reproduce them without EVERLIGHT's consent.